

Churston Drive Morden, SM4 4JD

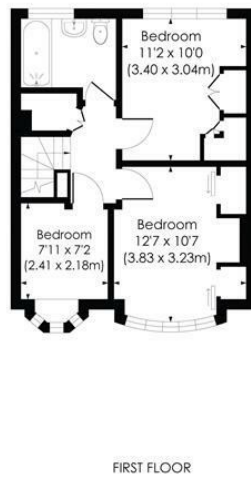
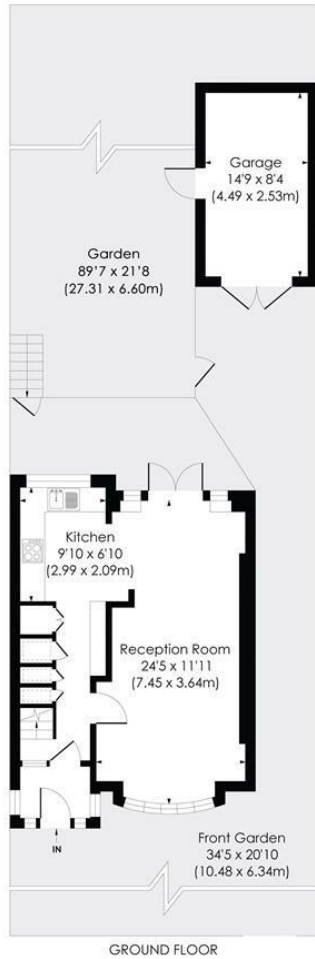
£640,000 Freehold



In excellent condition throughout, a three bedroom end of terrace 'Selley built' family home, boasting a generous driveway with ample parking space for two cars and a garage, located in the desirable Hillcross area of Morden. Boasting a double length open plan reception and modern kitchen, with copious storage on the ground floor. Doors open out onto a sunny south west facing garden with decking and side access. Upstairs comprises two spacious double bedrooms with built-in wardrobes, a third single bedroom and modern family bathroom. There is further potential to extend into the loft and downstairs (subject to planning permission). Ideally located for transport links including Morden Northern Line tube, Raynes Park Train Station and the Thameslink, as well as desirable schools.

CHURSTON DRIVE, SM4

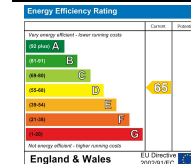
Approx. Gross Internal Floor Area
865 Sq. ft/80.36 Sq. m (Excl. Garage)
Garage: 122 Sq. ft/11.56 Sq. m



This floor plan has been prepared for the purpose of illustration only in accordance with the latest RICS code of measuring practice and is not to scale. All measurements and areas are approximate and whilst every effort has been made to ensure the accuracy of the plan contained here, no responsibility is taken for any error, omission or misstatement.

© Pixangle Property Marketing Ltd. info@pixangle.com Tel: 0208 870 2118

- End of Terrace Family Home
- In Excellent Condition
- Three Bedrooms
- Off Street Parking & Garage
- Large South-West Facing Garden with Side Access
- Desirable Location in the 'Hillcross' area of Morden
- Potential to Extend (STPP)
- Freehold
- EPC Rating - D
- Merton Council Tax Band - D



For Free Mortgage Quote and Best Mortgage Rates, call Ellisons Mortgage Advisor, on 0208 543 1166



Although these particulars are believed to be correct, their accuracy is not guaranteed and they do not form part of any contract.

Celebrating 30 years of successful Sales and Lettings in Merton

